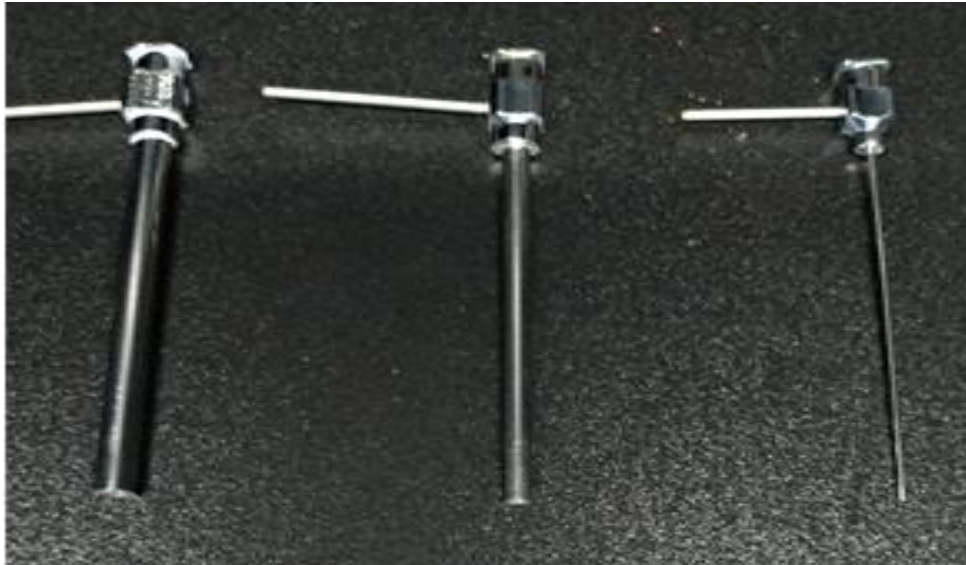


Single Axial Electrospinning/Electrospraying needles



Specification summery

Genvolt offers a variety of single, coaxial, triaxial, and bent needles featuring the industry-standard Luer-lock hub to cover all needs at your laboratory for research activities, for pre-industrial purposes. Genvolt has an increasingly prominent position in the market for complete range of needles used majorly in Laboratory & Research field.

Our most popular single needles product is our straight stainless steel reusable needles (size 8, 11, and 20 gauge).

Needles chart

Gauge	Outside diameter (mm)	Inside diameter (mm)	Wall thickness (mm)	Length (mm)	Arm length (mm)
20	0.9	0.6	0.15	81.85	22
11	3	2.4	0.3	81.85	22
8	4	3.2	0.4	81.85	22

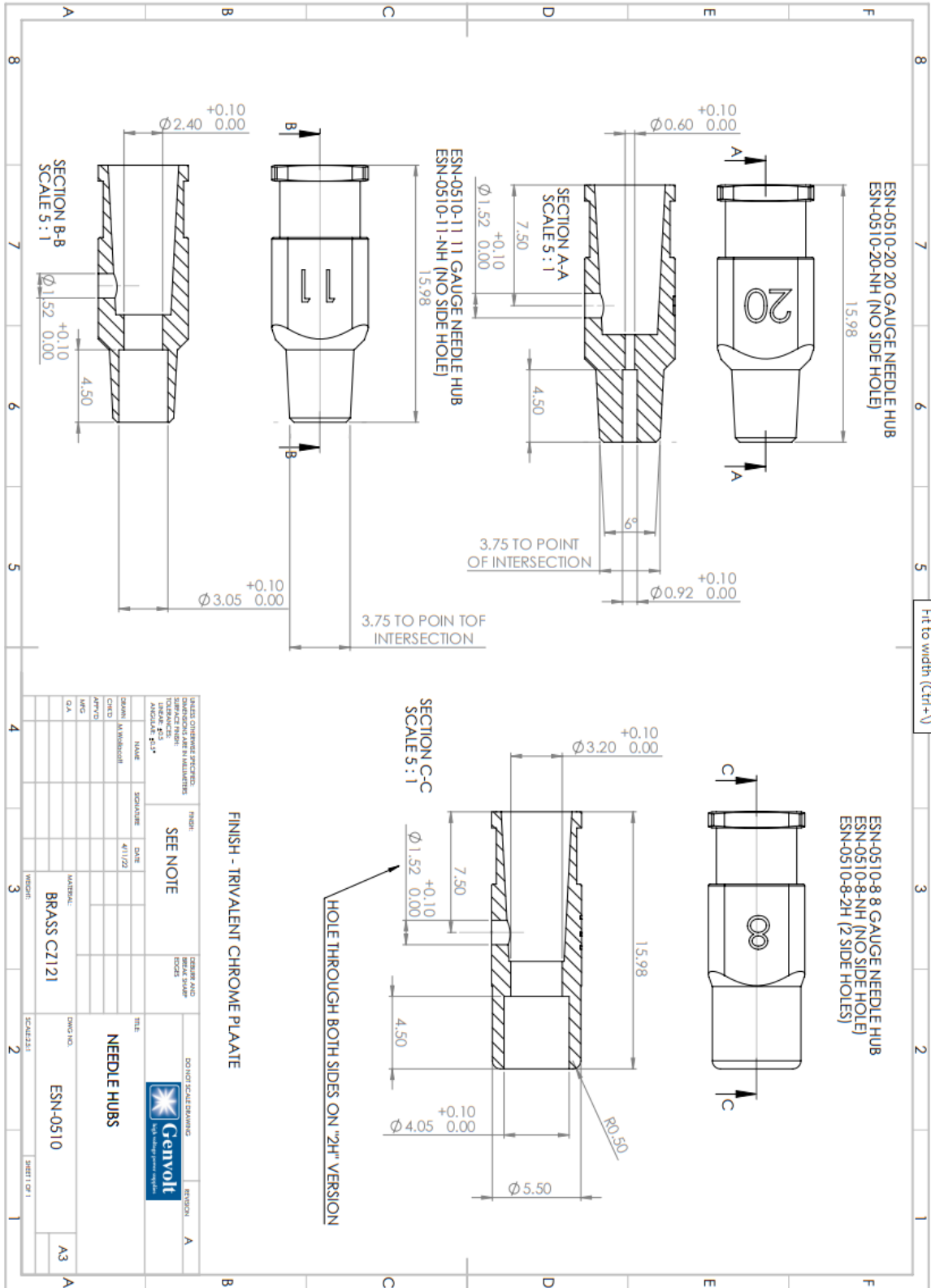
Highly functional needle system

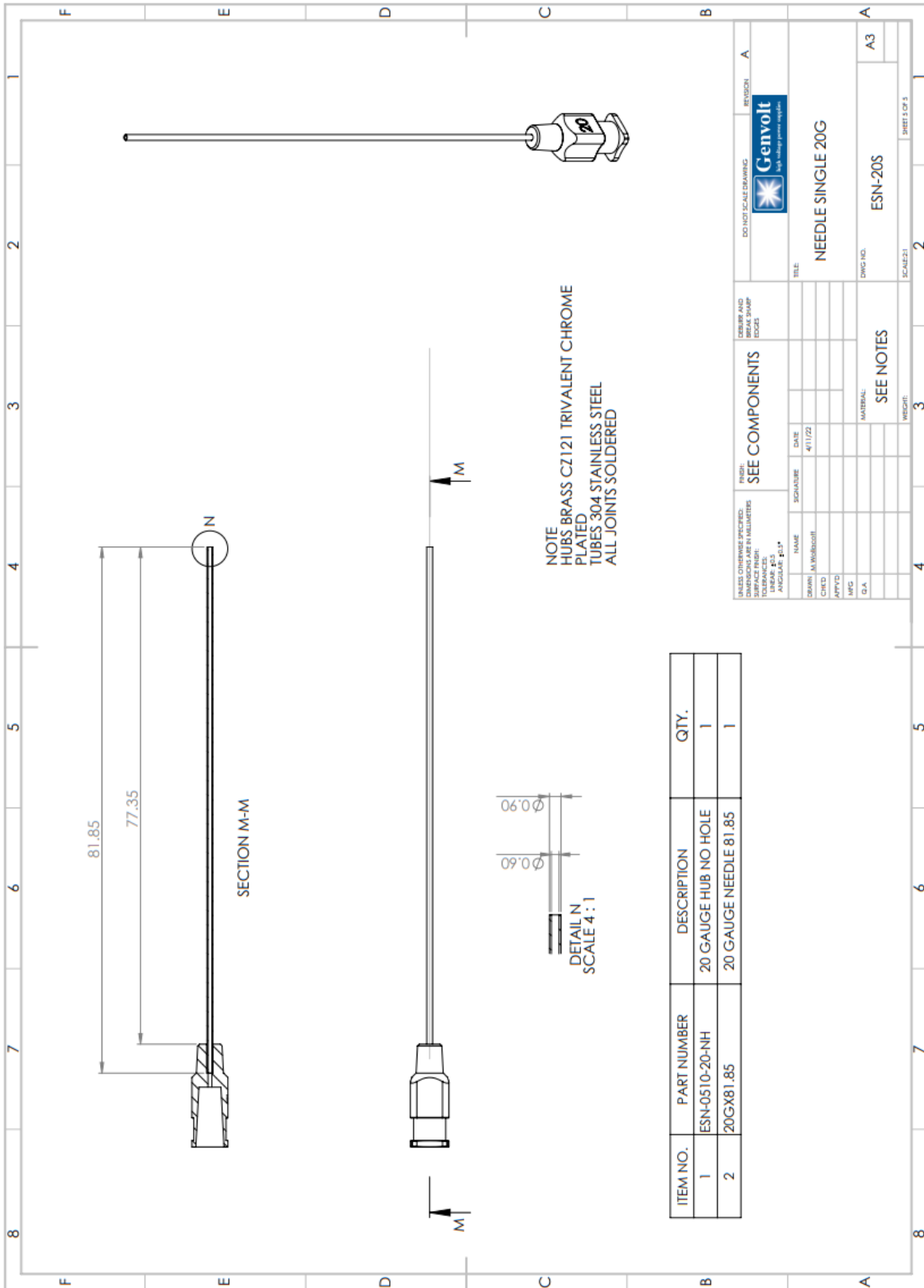
We manufacture all needles using high quality materials.

Metal Chrome plate brass

Available in assorted sizes

Schematics and dimensions





ITEM NO.	PART NUMBER	DESCRIPTION	QTY.
1	ESN-0510-20-NH	20 GAUGE HUB NO HOLE	1
2	20GX81.85	20 GAUGE NEEDLE 81.85	1

CHECKED: _____ DATE: 4/11/22		DO NOT SCALE DRAWING	
DRAWN: M. WILSON		REFUSCH: A	
TITLE: NEEDLE SINGLE 20G		Genvolt High Voltage Power Supplies	
MATERIAL: SEE NOTES		DWG NO: ESN-20S	
WEIGHT:		SCALE: 1:1	
SEE COMPONENTS		SHEET 3 OF 3	

Genvolt

high voltage power supplies

Genvolt design, develop and manufacture.